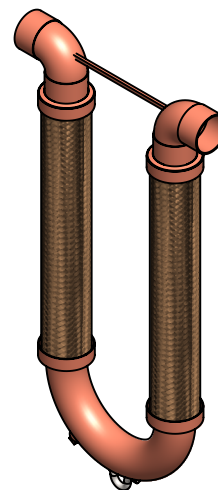


CLASSIFIED
UL
WATER QUALITY
 DRINKING WATER
 SYSTEM COMPONENT
 ANSI/NSF 61
 <4LN1>



MATERIALS OF CONSTRUCTION*
 CUSTOM 180° - COPPER
 HOSE & BRAID - BRONZE
 90° ELBOWS - COPPER
 *OTHER MATERIALS AVAILABLE

The wetted surface of this product contacted by consumable water contains less than one quarter of one percent (0.25%) of lead by weight. Material complies with state codes and standards, where applicable, requiring reduced lead content.

NOTE: METRALOOPS 2" AND LARGER INSTALLED IN ANY ORIENTATION OTHER THAN HANGING DOWN MUST HAVE THE 180° RETURN SUPPORTED. (SEE INSTALLATION INSTRUCTIONS.)

CONTACT FACTORY FOR ADDITIONAL SIZES AND MOVEMENTS. ALL DIMENSIONS IN INCHES.

QTY	SIZE	MODEL	MVMT	A	B	PSI*	WT (LBS)	SPRING FORCE**	PROJECT INFO
	1/2"	MLS30050	±1-1/2"	7-3/4"	11-1/2"	706	2	45	
	3/4"	MLS30075	±1-1/2"	9-1/2"	13-1/8"	577	2	47	
	1"	MLS30100	±1-1/2"	10-1/4"	14-5/8"	470	2.5	53	
	1-1/4"	MLS30125	±1-1/2"	11-1/8"	16-3/8"	361	3.5	66	
	1-1/2"	MLS30150	±1-1/2"	11-5/8"	17-1/4"	329	4	70	
	2"	MLS30200	±1-1/2"	13-3/8"	18-3/4"	317	9	78	

*Working pressure listed is the rating at 70 F. Contact factory for other pressure ratings at other temperatures and for steam applications.

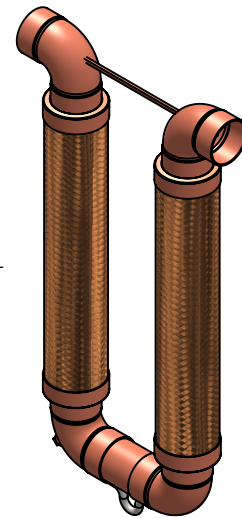
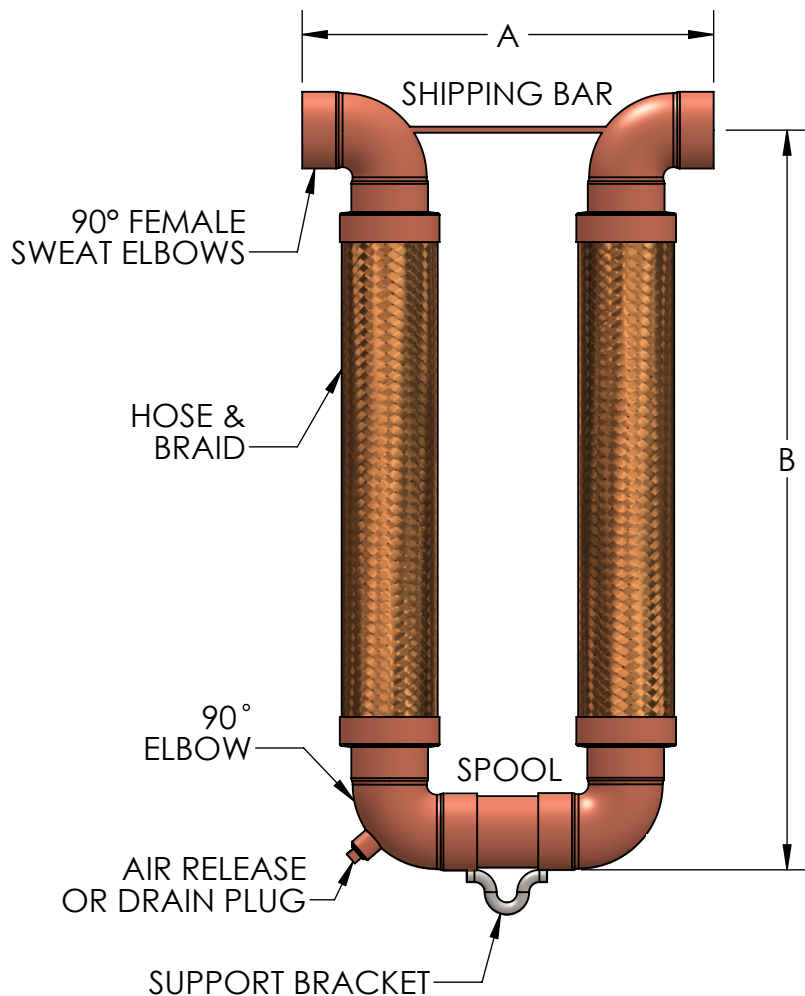
**Spring force: The total force (Lbs) required to move the Metraloop its full rated movement for 150 PSI @ 70 F.

CUSTOMER: _____

PROJECT: _____

ENGINEER: _____

REV.	DATE
2323 W. HUBBARD ST. CHICAGO, IL 60612 TEL: 312-738-3800 FAX: 312-738-0415 WWW.METRAFLEX.COM	
METRALOOP MODEL MLS SWEAT ENDS, ±1-1/2" MOVEMENT	
DRAWN BY: DKISH	DATE: 10/31/2018
APPROVED: JC	DATE: 10/31/2018
SCALE: NTS	DRAWING NUMBER: MLS30050-200



MATERIALS OF CONSTRUCTION*

HOSE & BRAID - BRONZE

90° ELBOW - COPPER

SPOOL - COPPER

*OTHER MATERIALS AVAILABLE

The wetted surface of this product contacted by consumable water contains less than one quarter of one percent (0.25%) of lead by weight. Material complies with state codes and standards, where applicable, requiring reduced lead content.

NOTE: METRALOOPS 2" AND LARGER INSTALLED IN ANY ORIENTATION OTHER THAN HANGING DOWN MUST HAVE THE 180° RETURN SUPPORTED. (SEE INSTALLATION INSTRUCTIONS.)

CONTACT FACTORY FOR ADDITIONAL SIZES AND MOVEMENTS. ALL DIMENSIONS IN INCHES.

QTY	SIZE	MODEL	MVMT	A	B	PSI*	WT (LBS)	SPRING FORCE**	PROJECT INFO
	2-1/2"	MLS30250	±1-1/2"	15"	19-3/4"	272	12	83	
	3"	MLS30300	±1-1/2"	16"	21-1/2"	201	18	90	
	4"	MLS30400	±1-1/2"	20"	24-3/4"	142	26	120	

*Working pressure listed is the rating at 70 F. Contact factory for other pressure ratings at other temperatures and for steam applications.

**Spring force: The total force (Lbs) required to move the Metraloop its full rated movement for 150 PSI @ 70 F.

CUSTOMER: _____

PROJECT: _____

ENGINEER: _____

REV.	DATE
2323 W. HUBBARD ST. CHICAGO, IL 60612 TEL: 312-738-3800 FAX: 312-738-0415 WWW.METRAFLEX.COM	
METRALOOP MODEL MLS SWEAT ENDS, ±1-1/2" MOVEMENT	
DRAWN BY: DKISH	DATE: 10/31/2018
APPROVED: JC	DATE: 10/31/2018
SCALE: N/A	DRAWING NUMBER: MLS30250-400